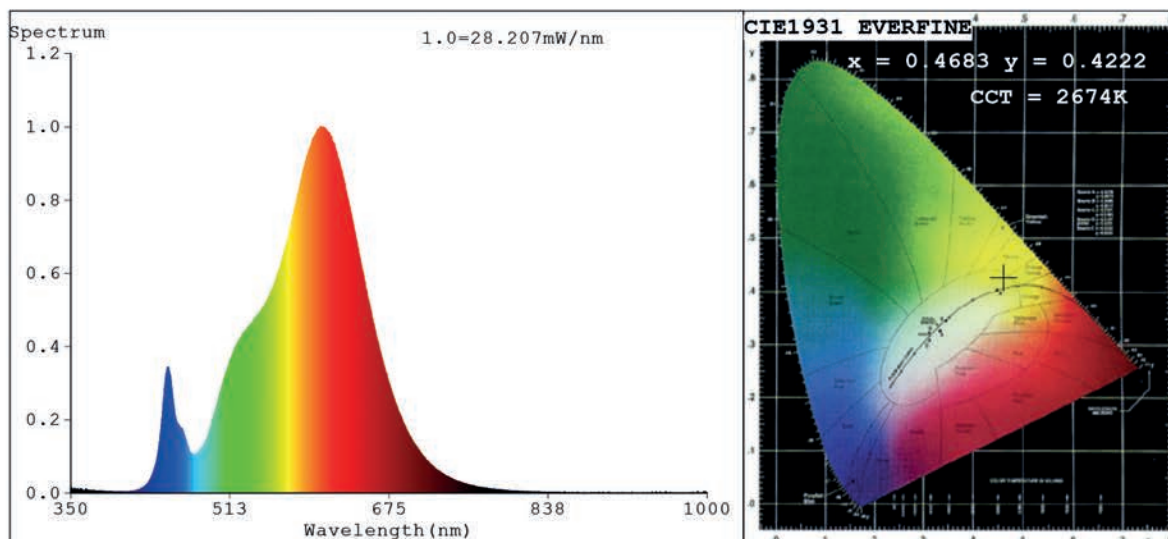


Spectrum Test Report



Color Parameters:

Chromaticity Coordinate: $x=0.4683$ $y=0.4222$ $u'=0.2627$ $v'=0.5330$
 CCT=2674K (Duv=0.0035) Dominant WL:Ld =583.3nm Purity=67.3%
 Ratio:R=25.2% G=73.0% B=1.8%; Peak WL:Lp=605.9nm FWHM=111.3nm
 Render Index:Ra=82.2 CRI=76.5 TM30:Rf=83 Rg=94 Lav=596.4nm
 R1 =80 R2 =90 R3 =98 R4 =81 R5 =80 R6 =89 R7 =83
 R8 =56 R9 =2 R10=78 R11=82 R12=70 R13=82 R14=99 R15=71

Photo Parameters:

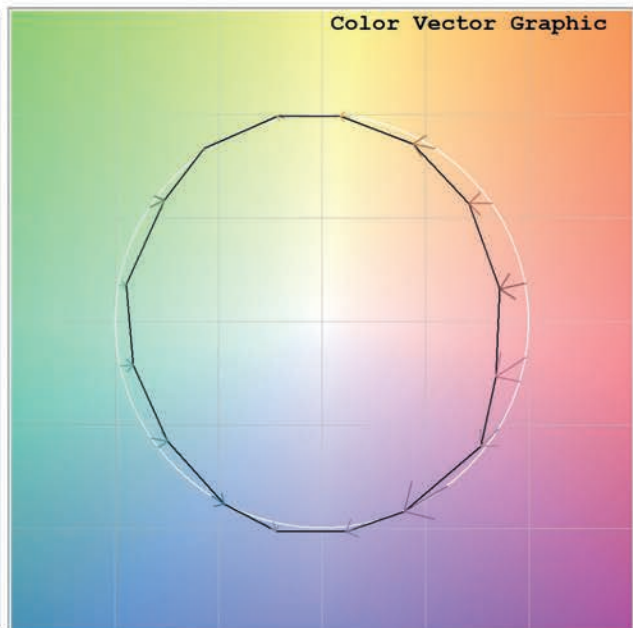
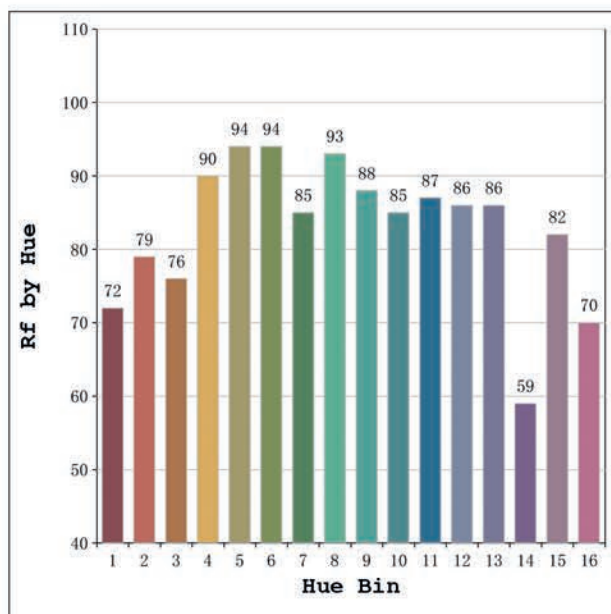
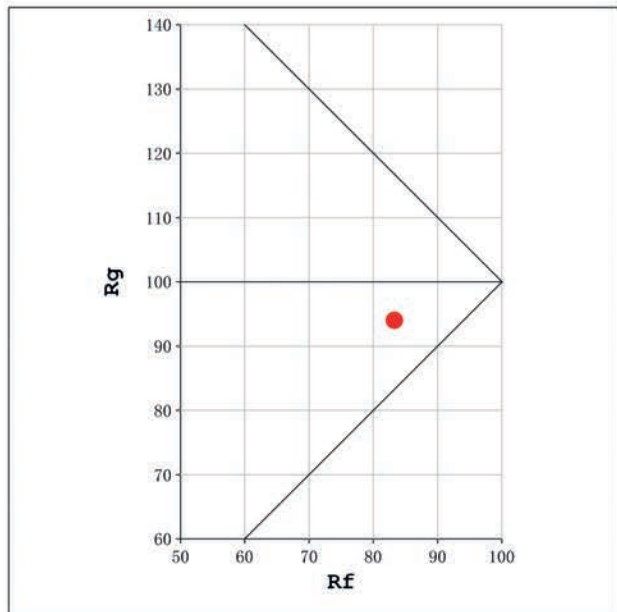
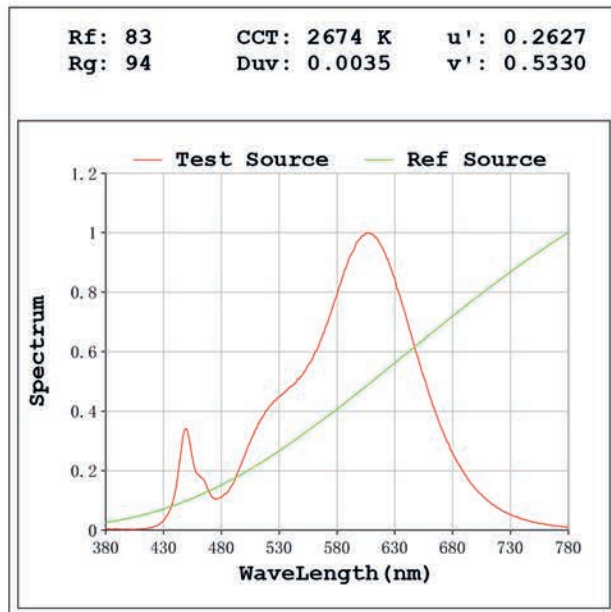
Flux = 1258 lm Eff. : 120.62 lm/W Fe = 3.760 W

Electrical parameters:

V = 23.998 V I = 0.4346 A P = 10.43 W PF = 1.000

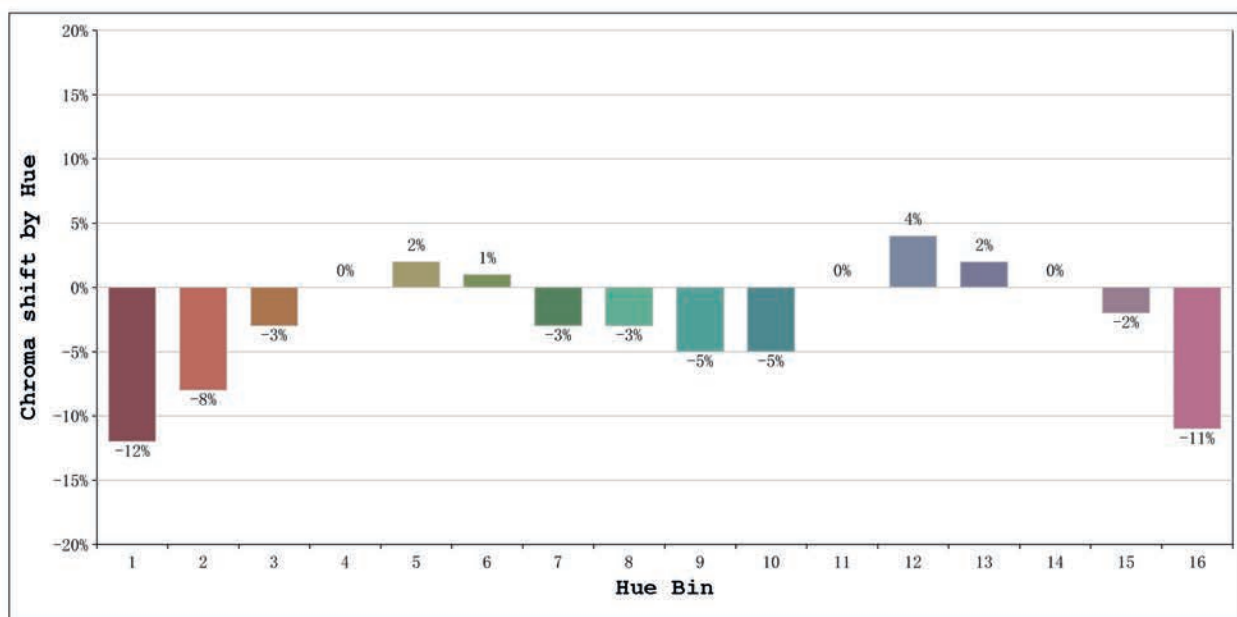
Status: Integral T = 603 ms Ip = 31824 (49%)

Model:Ecoled Comfort basic 2700k	Number: 36.084
Tester:Sergio Carneros	Date:2024-11-21 13:57:26
Temperature:27Deg	Humidity:35%
Manufacturer:Luz Negra S.L.	Remarks:tira rigida de 480mm



Model:Ecoled Comfort basic 2700k
 Tester:Sergio Carneros
 Temperature:27Deg
 Manufacturer:Luz Negra S.L.

Number: 36.084
 Date:2024-11-21 13:57:26
 Humidity:35%
 Remarks:tira rigida de 480mm



			Graphic shift(%)	
Hue Bin	Hue Angle	Rf	Chroma	Hue
1	0.0° - 22.5°	72	-12	0
2	22.5° - 45.0°	79	-8	6
3	45.0° - 67.5°	76	-3	10
4	67.5° - 90.0°	90	0	5
5	90.0° - 112.5°	94	2	4
6	112.5° - 135.0°	94	1	0
7	135.0° - 157.5°	85	-3	-6
8	157.5° - 180.0°	93	-3	0
9	180.0° - 202.5°	88	-5	1
10	202.5° - 225.0°	85	-5	6
11	225.0° - 247.5°	87	0	7
12	247.5° - 270.0°	86	4	2
13	270.0° - 292.5°	86	2	-8
14	292.5° - 315.0°	59	0	-23
15	315.0° - 337.5°	82	-2	-11
16	337.5° - 360.0°	70	-11	-11

Model:Ecoled Comfort basic 2700k Number: 36.084
 Tester:Sergio Carneros Date:2024-11-21 13:57:26
 Temperature:27Deg Humidity:35%
 Manufacturer:Luz Negra S.L. Remarks:tira rigida de 480mm